

DATA COACHING: Unleashing the Power of Collaborative Inquiry

AUDIENCE

To be trained as **DATA COACHES**
of **DATA TEAMS**:

TEACHERS

ADMINISTRATORS

COACHES

STAFF DEVELOPERS



OUTCOMES

As a result of taking this program, Data Coaches will gain essential skills and knowledge in four areas:

- **Data literacy:** Understand, accurately interpret, and respond appropriately to multiple data sources, including formative and summative student-learning assessments, student work, and quantitative and qualitative data related to programs, practices, and policies
- **Facilitation:** Facilitate data-driven dialogue and lead Data Teams or Professional Learning Communities through short cycles of planning, implementing, and monitoring instructional improvement
- **Leadership for sustainability:** Communicate vision, build broad support, and establish systems to sustain a culture of continuous improvement
- **Cultural proficiency:** Respond to data by expanding opportunities to learn to diverse students and monitor the data process to assure that responses “do no harm” to any student groups

The Data Coaching program is designed for Data Coaches to learn about a structured process of collaborative inquiry that is increasing professional community, effective uses of data, and student achievement in schools across the country. The approach features the development of Data Coaches, school and district leaders who guide school-based Data Teams, through a process of:

1. Building a foundation
2. Identifying a student-learning problem
3. Verifying causes of student-learning problems
4. Generating and monitoring solutions
5. Achieving results.

Through this program, Data Coaches learn how to lead a process of collaborative inquiry with Data Teams or Professional Learning Communities and to influence the culture of schools to be one in which data are used continuously, collaboratively, and effectively to improve teaching and learning. The program is based on *The Data Coach's Guide to Improving Learning for All Students: Unleashing the Power of Collaborative Inquiry* (Corwin Press, 2008), by Nancy Love, Katherine E. Stiles, Susan Mundry, and Kathryn DiRanna.

37.5 Hour Program with Recommended On-Site Follow-Up

Participants completing all program requirements can receive optionally three graduate credits through Fitchburg State University.



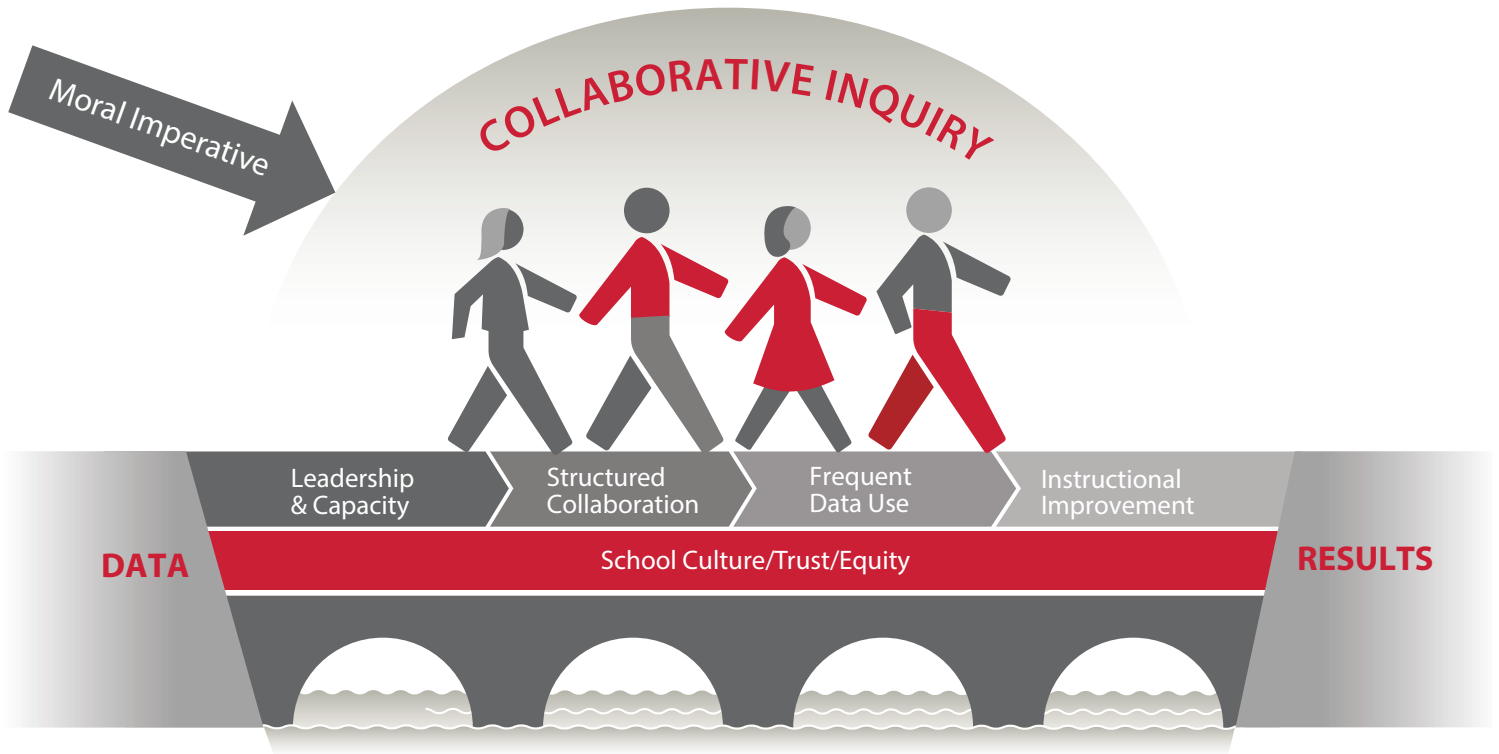
Research for **Better Teaching**
Empowering Sustainable School Improvement

One Acton Place, Acton, MA 01720 | +1 (978)263-9449 | www.RBTeach.com

**DATA COACHING:
Unleashing The Power Of
Collaborative Inquiry**



Building the Bridge Between Data and Results



Adapted from: Nancy Love, Katherine E. Stiles, Susan Mundry and Kathryn DiRanna. 2008. The Data Coach's Guide to Improving Learning for All Students. Thousand Oaks, CA: Corwin Press.



Research for Better Teaching
Empowering Sustainable School Improvement

One Acton Place, Acton, MA 01720
+1 (978)263-9449 | www.RBTeach.com